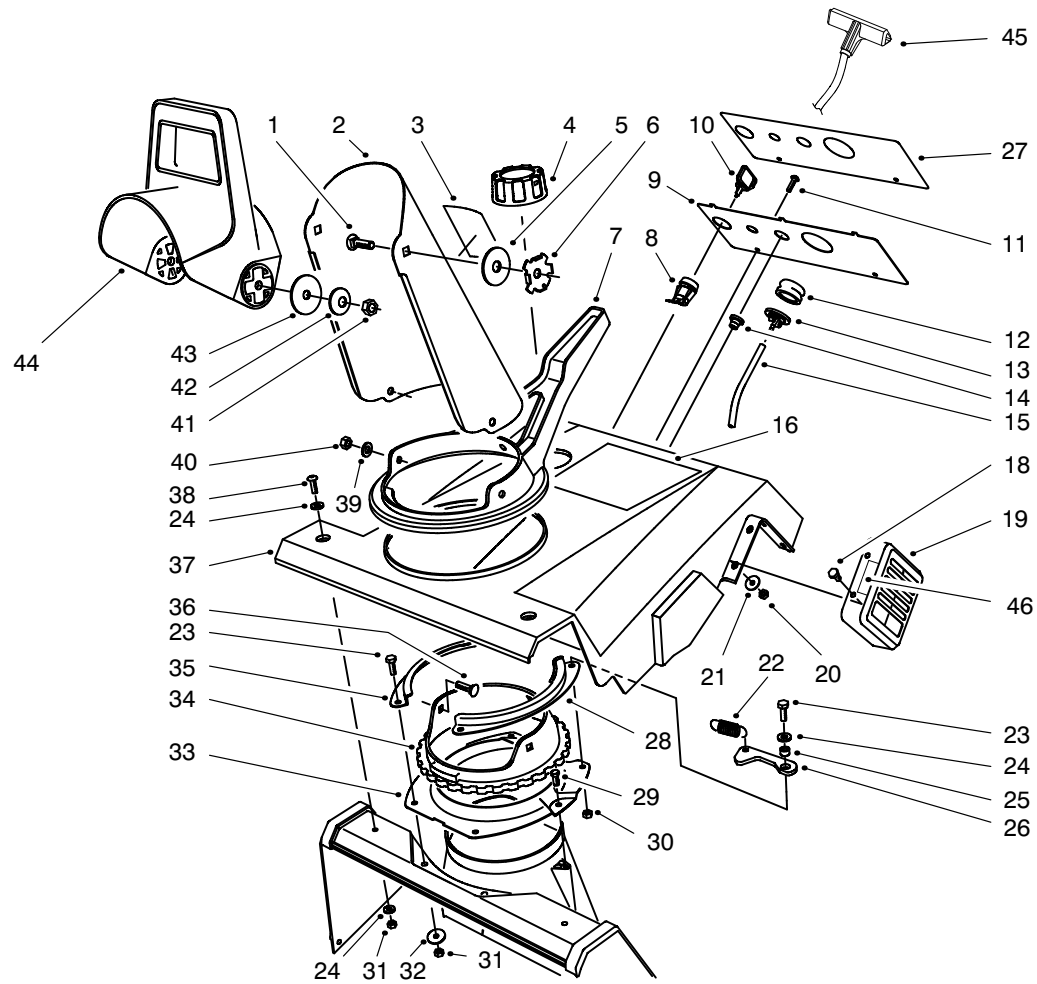


LAWN-BOY®

**MODEL NO. 28220-8900001 & UP
MODEL NO. 28222-8900001 & UP**

**PARTS
CATALOG**

**320 SNOWTHROWER
320E SNOWTHROWER**



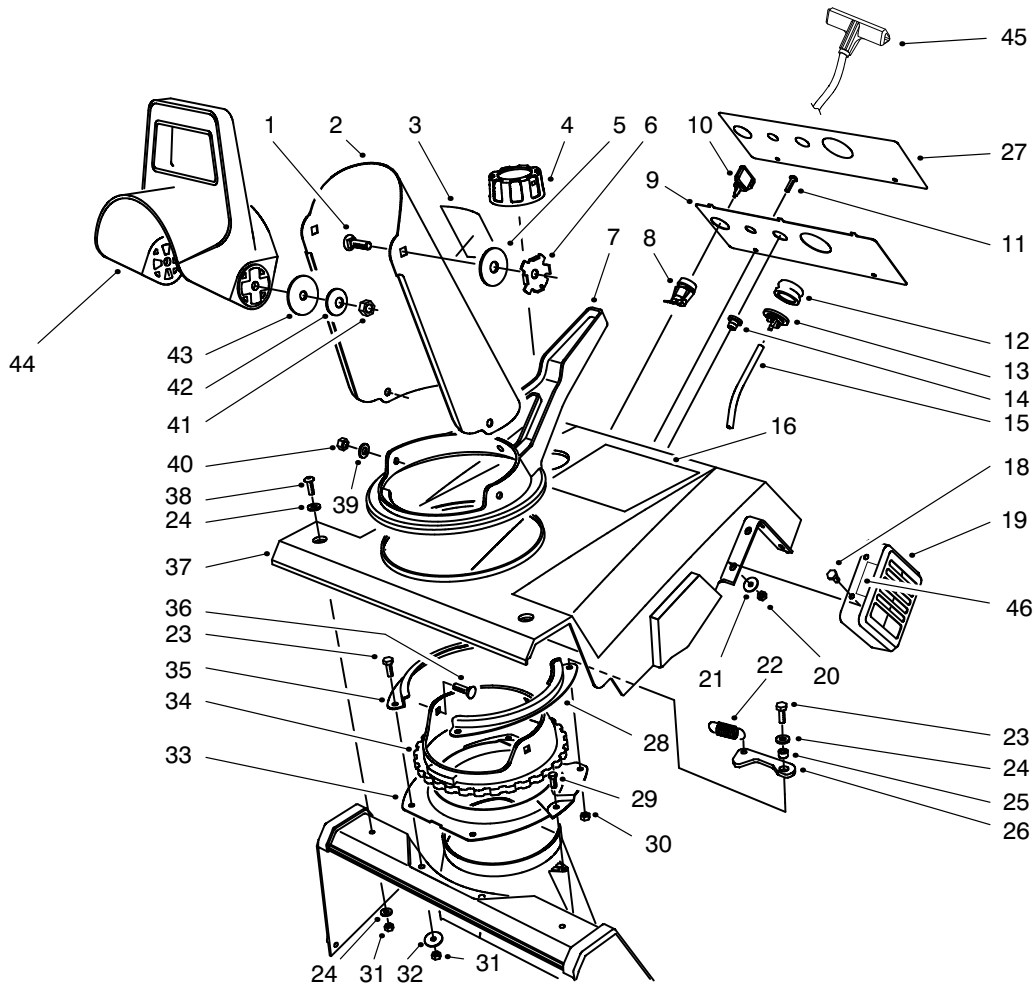
C-1740B

UPPER SHROUD ASSEMBLY

Ref. No.	Part No.	Description	No. Used
1	3230-22	Bolt - Carriage	2
2	94-2790	Discharge Chute Assembly (Incl. Ref. #3)	1
3	94-2900	Decal - Danger	1
4	55-3578	Gas Cap Assembly	1
5	20-4320	Washer - Rubber	2
6	55-8950	Plate - Friction	2
7	71-4940	Handle - Chute	1
8	40-5940	Switch - On-Off	1
9	71-5240	Panel - Control (Model No. 28220)	1
*	71-5241	Panel - Control (Model No. 28222)	1
10	700918	Key - Ignition	1
11	32144-53	Screw - Slotted Flange Hd.	2
12	66-7460	Bulb - Primer	1
13	44-2750	Body - Primer	1
14	23-7470	Guide - Rope	1

Ref. No.	Part No.	Description	No. Used
15	44-3173	Hose - Primer	1
16	94-9878	Decal - 320 (Model No. 28220)	1
*	94-9879	Decal - 320E (Model No. 28222)	1
18	3290-359	Screw - Hex. Hd.	4
19	71-5340	Guard - Muffler	1
20	3296-2	Nut - Lock	4
21	3256-61	Washer - Flat	4
22	71-5590	Spring - Extension	1
23	321-4	Screw - Hex. Hd.	4
24	3256-22	Washer - Flat	5
25	55-9370	Spacer - Detent Arm	1
26	80-4610	Arm - Detent	1
27	95-2665	Decal - Control Panel (Model No. 28220)	1
*	95-2666	Decal - Control Panel (Model No. 28222)	1

*Not Illustrated

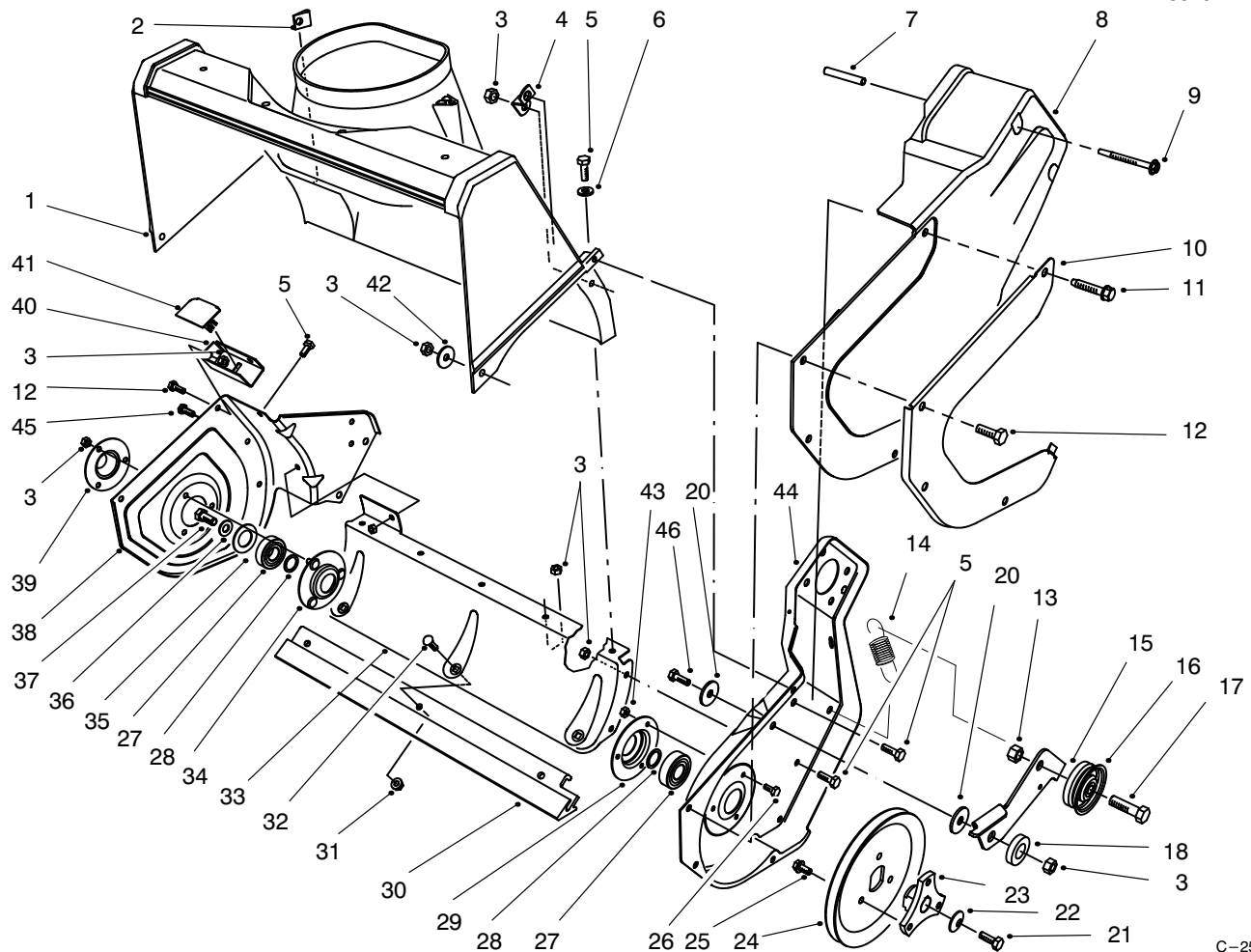


C-1740B

UPPER SHROUD ASSEMBLY (Continued)

Ref. No.	Part No.	Description	No. Used
28	71-4980	Retainer - Chute Ring L.H.	1
29	46-8092	Screw - Hex. Flange Hd.	2
30	3296-56	Nut - Lock	1
31	3296-42	Nut - Lock	5
32	3256-22	Washer - Flat	2
33	55-8921	Support - Chute Ring	1
34	71-4950	Ring - Chute	1
35	71-4990	Retainer - Chute Ring R.H.	1
36	3230-16	Bolt - Carriage	3
37	94-8888	Shroud - Upper	1

Ref. No.	Part No.	Description	No. Used
38	3250-32	Screw - Pan Hd.	2
39	3256-70	Washer - Flat	3
40	32149-1	Nut - Keps	3
41	3296-29	Nut - Lock	2
42	3290-456	Washer - Belleville	2
43	3256-68	Washer - Flat	2
44	56-2680	Deflector - Discharge	1
45	92-4853	Handle - Starter	1
46	95-1904	Decal - Hot	1

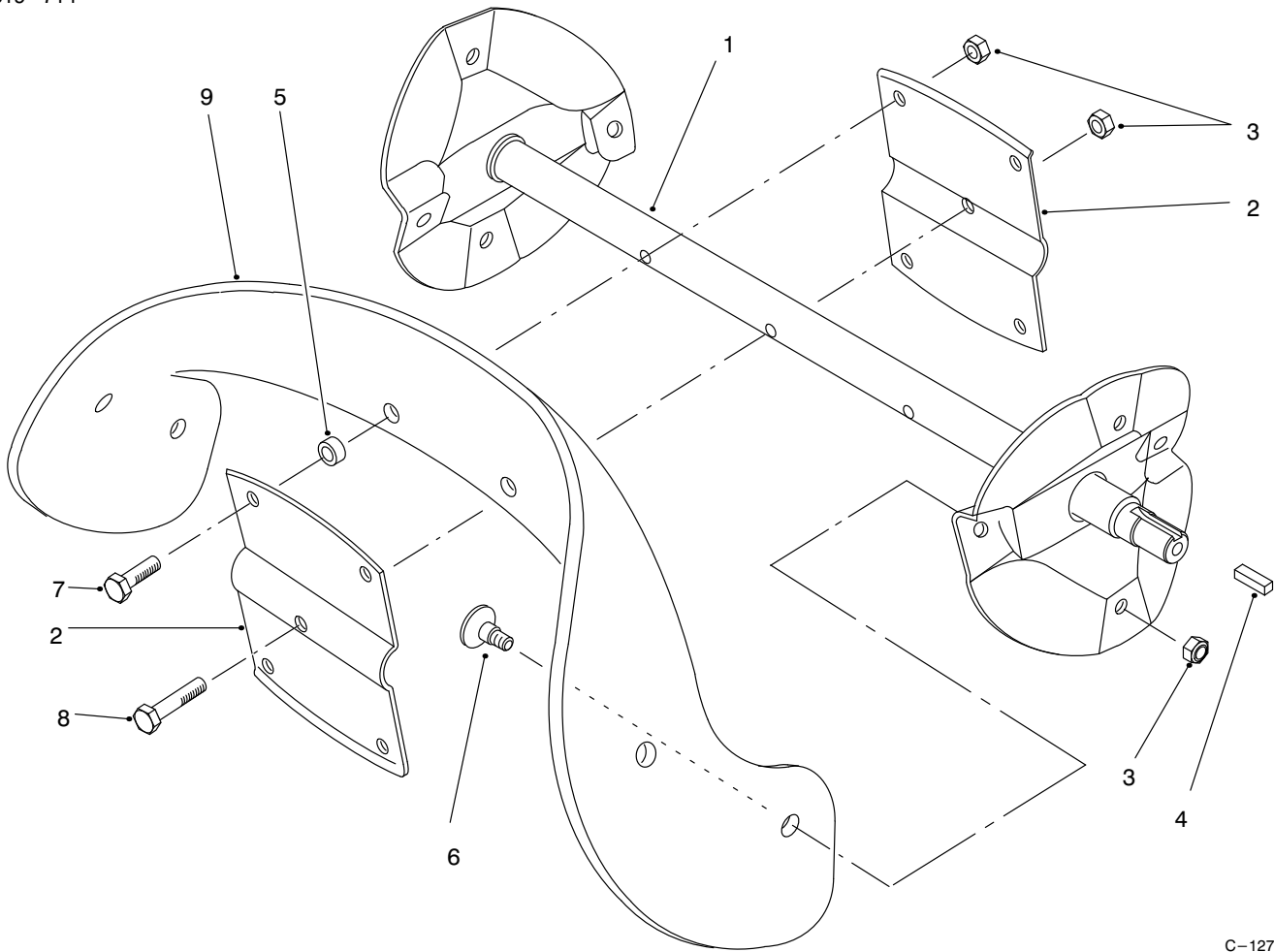


C-2569

ROTOR HOUSING ASSEMBLY

Ref. No.	Part No.	Description	No. Used
1	55-8700	Housing - Rotor	1
2	32115-14	Nut - U	1
3	3296-42	Nut - Lock	21
4	55-9430	Bracket - Z	1
5	321-4	Screw - Hex. Hd.	10
6	3256-22	Washer - Flat	5
7	57-3830	Tube	2
8	71-5030	Cover - Drive	1
9	71-5350	Screw - Thread Forming	2
10	71-5150	Guard - Drive Cover	1
11	36-3860	Screw - Special	1
12	32105-15	Screw - Hex. Flange Hd.	7
13	3296-39	Nut - Lock	1
14	71-5470	Spring - Brake	1
15	71-5160	Arm - Brake	1
16	71-5260	Pulley - Idler	1
17	323-44	Screw - Hex. Hd.	1
18	80-4620	Washer - Spacer	1
20	3256-55	Washer	2
21	321-30	Screw - Hex. Hd.	1
22	3290-456	Washer - Belleville	1
23	71-5070	Hub - Pulley	1
24	71-5410	Pulley - Rotor	1

Ref. No.	Part No.	Description	No. Used
25	12-3270	Screw - Hex. Flange Hd.	3
26	32105-8	Screw - Hex. Hd.	3
27	38-7820	Bearing - Ball	2
28	52-7280	Washer - Thrust	2
29	38-8620	Flange - Bearing	1
30	71-5390	Scraper	1
31	32128-10	Nut - Flange Lock	3
32	3229-11	Bolt - Carriage	3
33	71-4930	Housing - Lower	1
34	52-9110	Flange - Bearing	1
35	52-7270	Washer - Rubber	1
36	3256-24	Washer - Flat	1
37	3234-25	Screw - Hex. Hd.	1
38	71-4920	Sideplate - R.H.	1
39	52-7290	Retainer - Bearing	1
40	71-5310	Bracket - Support	1
41	71-5270	Cover - Bracket	1
42	3256-67	Washer - Flat	2
43	3296-2	Nut - Lock	3
44	71-4911	Sideplate - L.H.	1
45	321-39	Screw - Hex. Washer Hd.	1
46	321-6	Screw - Hex Hd. Cap	1

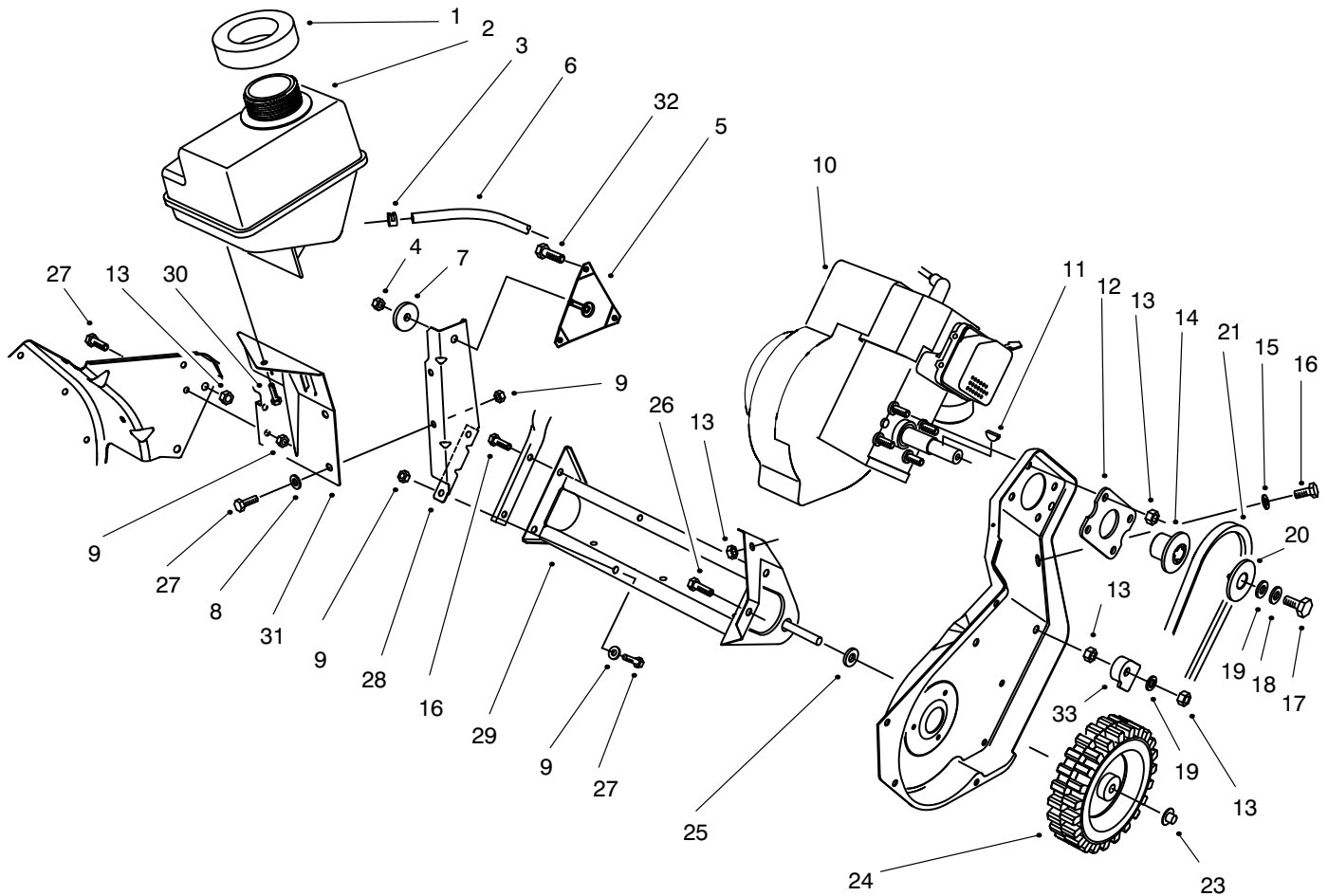


C-1273

ROTOR ASSEMBLY

Ref. No.	Part No.	Description	No. Used
1	55-9202	Rotor Shaft Assembly	1
2	66-6600	Plate - Rotor	2
3	3296-56	Nut - Lock	13
4	10-8040	Key - Square	1
5	55-9370	Spacer	4

Ref. No.	Part No.	Description	No. Used
6	84-1971	Screw - Countersunk	8
7	321-4	Screw - Hex. Hd.	4
8	321-8	Screw - Hex. Hd.	1
9	88-0781	Blade - Rotor	2



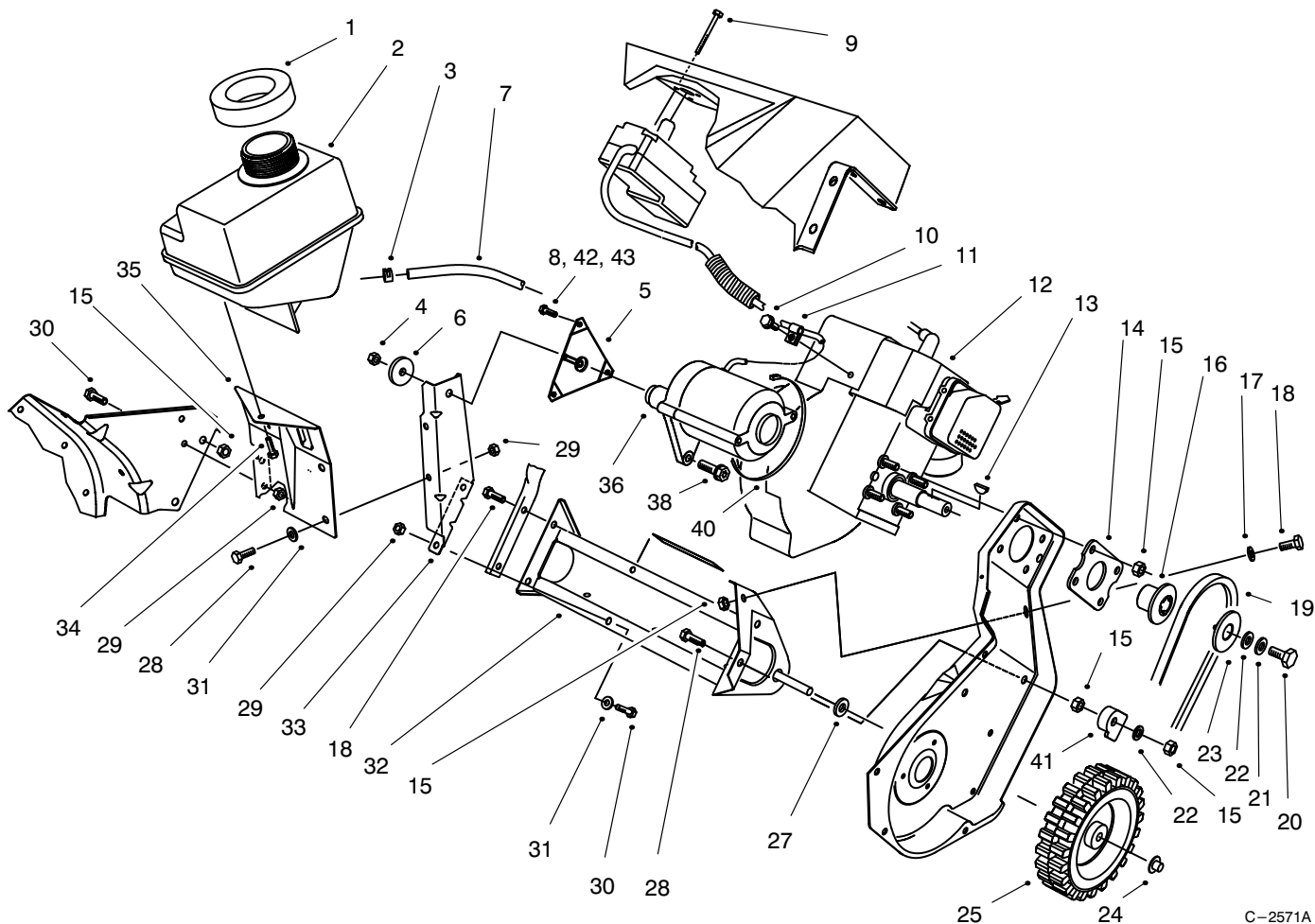
C-2570A

ENGINE & FRAME ASSEMBLY MODEL NO. 28220 (RECOIL)

Ref. No.	Part No.	Description	No. Used
1	55-9310	Seal - Fuel Tank	1
2	71-5020	Tank - Fuel	1
3	2412-98	Clamp - Hose	2
4	3296-16	Nut - Lock	1
5	92-6012	Bracket - & Stud Assembly	1
6	49-2482	Hose - Fuel	1
7	71-5320	Washer - Engine Support	1
8	3256-22	Washer - Flat	4
9	3296-42	Nut - Lock	6
†10		Engine - Tecumseh No. HSK600-1681T	1
11	3257-3	Key - Woodruff	1
12	71-5290	Plate - Engine	1
13	3296-29	Nut - Lock	9
14	71-5050	Hub - Sheave	1
15	3256-23	Washer - Flat	1
16	322-3	Screw - Hex. Hd.	3

Ref. No.	Part No.	Description	No. Used
17	3235-6	Screw - Locking Hex. Hd.	1
18	3290-456	Washer - Belleville	1
19	3256-71	Washer - Flat	2
20	71-5060	Cap - Sheave	1
21	71-5381	Belt - Drive	1
23	3290-320	Nut - Push	2
24	23-3250	Wheel	2
25	71-5440	Spacer - Wheel	2
26	322-5	Screw - Hex. Hd.	1
27	321-4	Screw - Hex. Hd.	6
28	71-5210	Support - Engine	1
29	71-5200	Frame Assembly	1
30	32144-53	Screw - Thread Forming	1
31	71-5220	Bracket - Fuel Tank	1
32	94-2789	Screw - Thread Form.	3
33	84-5610	Guide - Cable	1

† Obtain from your local Tecumseh dealer.



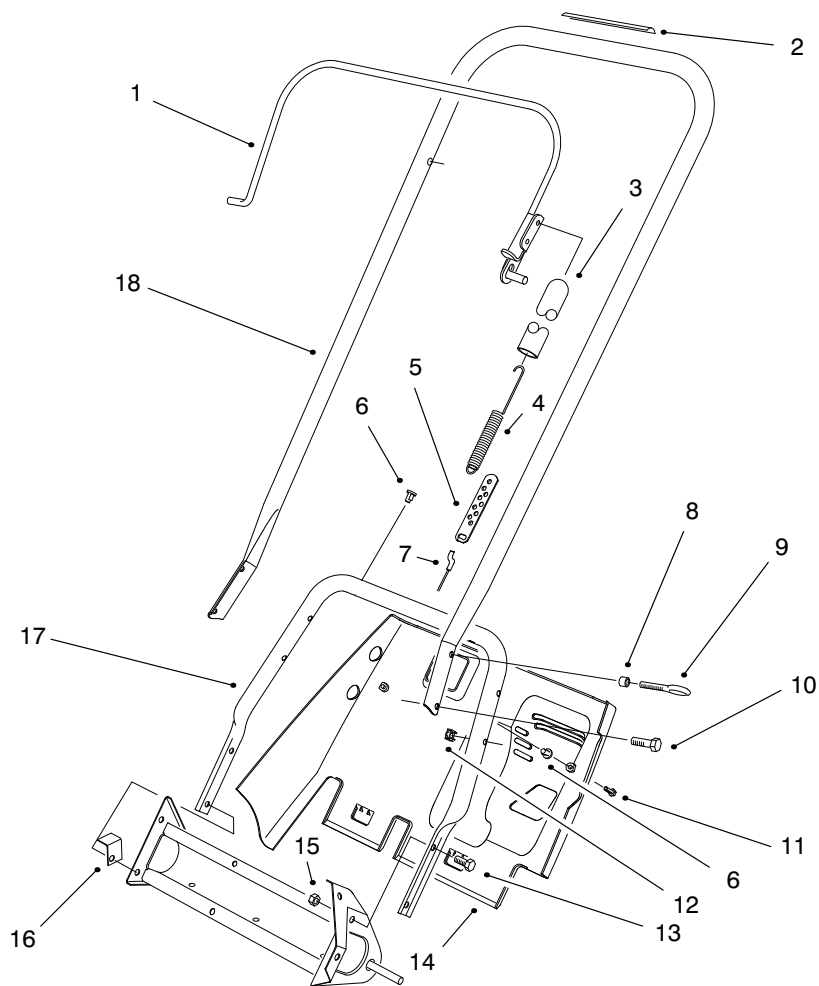
C-2571A

ENGINE & FRAME ASSEMBLY MODEL NO. 28222 (ELECTRIC)

Ref. No.	Part No.	Description	No. Used
1	55-9310	Seal - Fuel Tank	1
2	71-5020	Tank - Fuel	1
3	2412-98	Clamp - Hose	2
4	3296-16	Nut - Lock	1
5	92-6012	Bracket & Stud Assembly	1
6	71-5320	Washer - Engine Support	1
7	49-2482	Hose - Fuel	1
8	94-2789	Screw - Thread Forming	3
9	32144-27	Screw - Thread Forming	3
10	32144-10	Screw - Thread Forming	1
11	2412-91	Clamp - Cable	1
†12		Engine - Tecumseh No. HSK600-1681T	1
13	3257-3	Key - Woodruff	1
14	71-5290	Plate - Engine	1
15	3296-29	Nut - Lock	9
16	71-5050	Hub - Sheave	1
17	3256-23	Washer - Flat	1
18	322-3	Screw - Hex. Hd.	3
19	71-5381	Belt - Drive	1
20	3235-6	Screw - Locking Hex. Hd.	1

Ref. No.	Part No.	Description	No. Used
21	3290-456	Washer - Belleville	1
22	3256-71	Washer - Flat	2
23	71-5060	Cap - Sheave	1
24	3290-320	Nut - Push	2
25	23-3250	Wheel	2
27	71-5440	Spacer - Wheel	2
28	322-5	Screw - Hex. Hd.	1
29	3296-42	Nut - Lock	6
30	321-4	Screw - Hex. Hd.	6
31	3256-22	Washer - Flat	4
32	71-5200	Frame Assembly	1
33	71-5210	Support - Engine	1
34	32144-53	Screw - Thread Forming	1
35	71-5220	Bracket - Fuel Tank	1
36	77-0402	Starter Motor Assembly	1
38	80-0700	Screw - Hex. Torx	2
40	250-7	Strap - Starter Tie Down	1
41	84-5610	Guide - Cable	1
42	92-6031	Screw	A/R
43	3255-10	Washer - Lock	A/R

† Obtain from your local Tecumseh dealer.

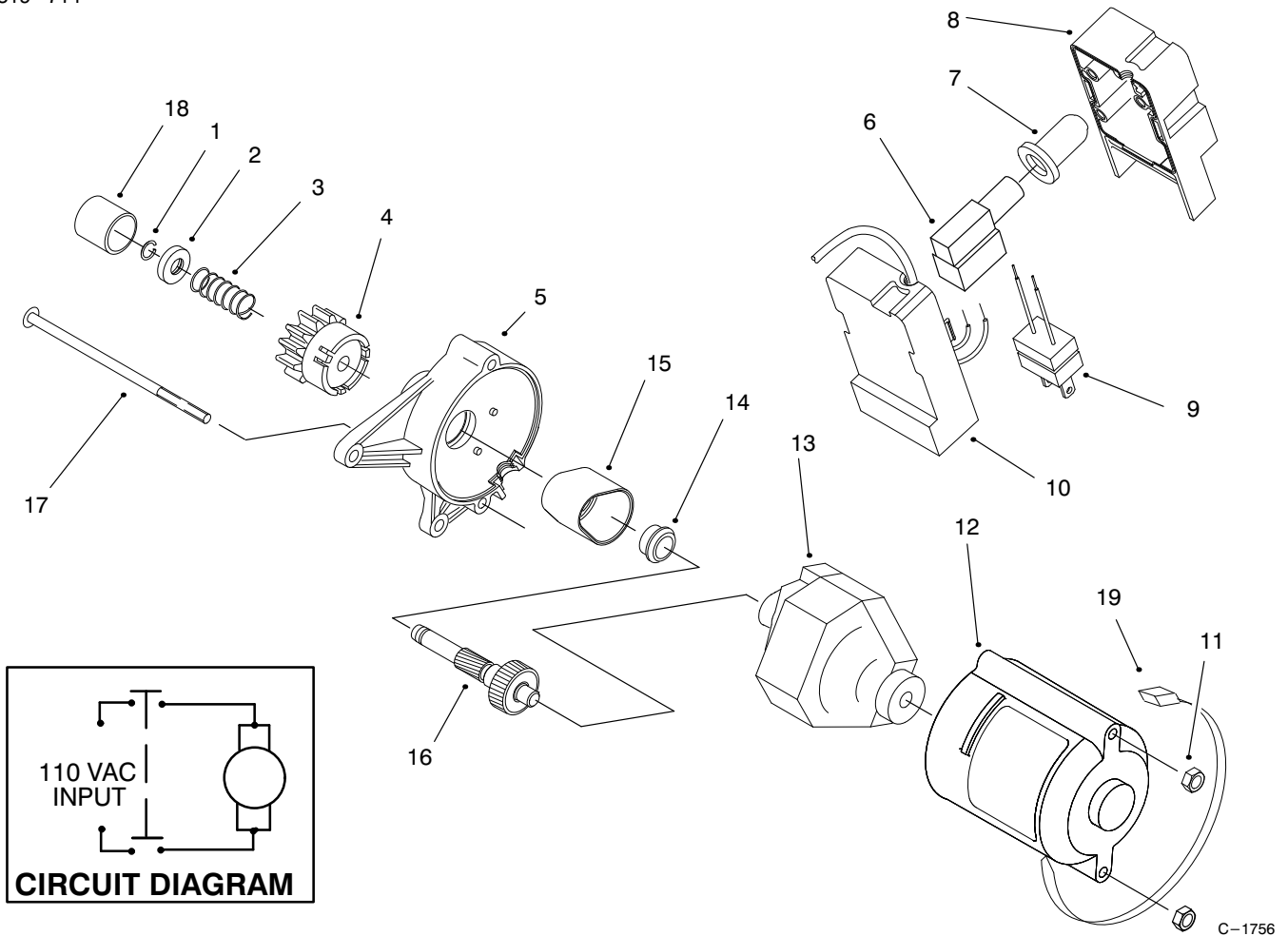


C-2705

HANDLE ASSEMBLY

Ref. No.	Part No.	Description	No. Used	Ref. No.	Part No.	Description	No. Used
1	71-5120	Bail	1	11	32144-53	Screw - Thread Form Acorn Head	3
2	66-6870	Decal - Rotor Drive	1	12	3290-225	Nut - Speed	4
3	71-5530	Cover - Spring	1	13	322-3	Screw - Hex Hd.	2
4	71-5480	Spring - Clutch	1	14	94-8889	Shroud - Lower	1
5	71-5330	Adjuster - Cable	1	15	3296-29	Nut - Lock	2
6	3290-486	Nut - Push	5	16	71-5600	Bracket - Shroud	1
7	55-9322	Cable - Clutch	1	17	71-5370	Tube - Handle Lower	1
8	55-9370	Spacer - Rotor Blade	1	18	71-5090	Handle - Upper	1
9	3299-1	Eyebolt	1				
10	32105-11	Screw - Slot Hex Hd.	3				

*Not Illustrated



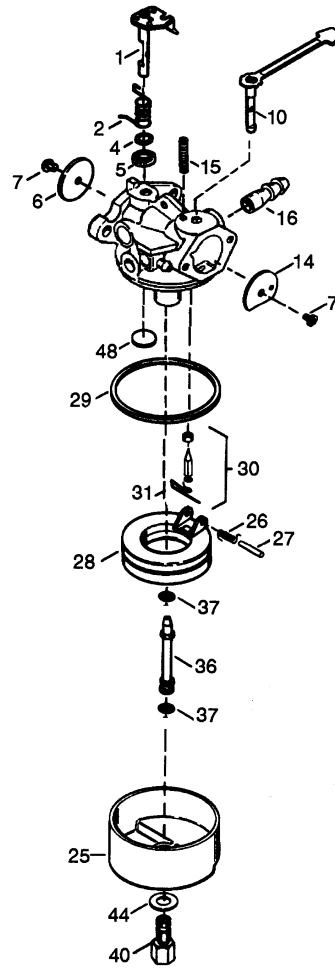
STARTER MOTOR ASSEMBLY (MODEL 28222) (ELECTRIC)

C-1756

Ref. No.	Part No.	Description	No. Used
1	61-4680	Ring - Lock	1
2	61-4670	Stop - Pinion	1
3	61-4690	Spring - Anti Drift	1
4	84-5240	Pinion Assembly	1
5	70-7810	Housing - Upper Starter	1
6	61-4820	Switch - Starter	1
7	61-4810	Boot - Switch	1
8	80-3740	Cap - Switch Housing	1
9	94-9933	Plug - Power	1
10	80-3730	Base - Switch Housing	1
11	3296-2	Nut - Lock	2
12	70-7820	Housing - Lower Starter	1

Ref. No.	Part No.	Description	No. Used
13	70-7802	Motor	1
14	70-7900	Bushing - Upper	1
15	70-7850	Cover - Gear	1
16	92-6003	Gear & Shaft Assembly	1
17	32144-101	Screw - Machine	2
18	70-7890	Cap - Pinion	1
19	250-7	Cable Tie	1
*	77-0402	Starter Motor Assembly (Incl. Ref. #1-5,11-18 & 19)	1
*	28-9170	Cord - 7 Ft.	1

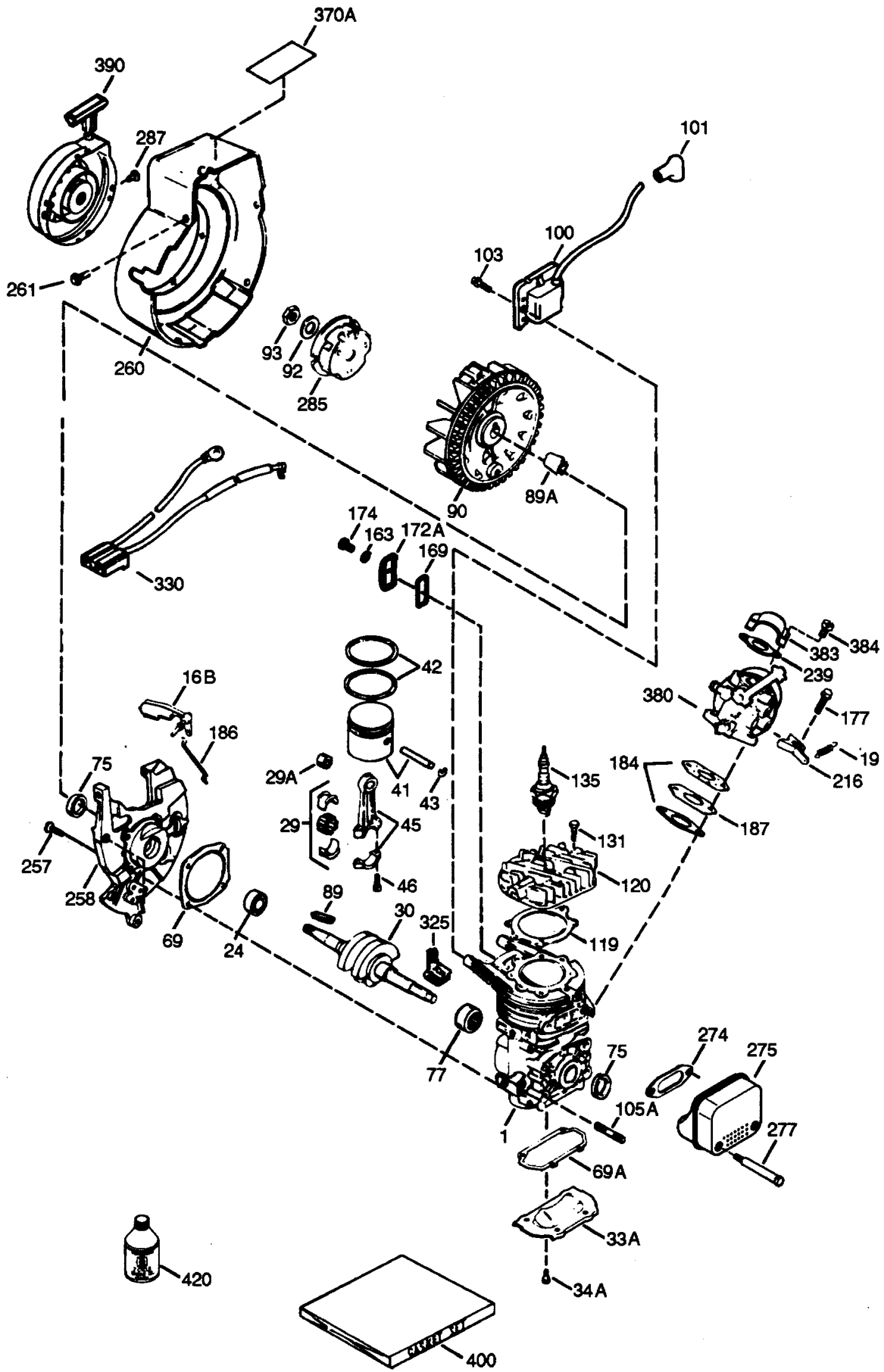
*Not Illustrated



CARBURETOR NO. 640086

Ref. No.	Part No.	Description	No. Used	Ref. No.	Part No.	Description	No. Used
1	632166A	Throttle Shaft & Lever Asm.	1	27	631024	Float shaft	1
2	632169	Throttle Return Spring	1	28	632019	Float	1
4	631184	Dust Seat Washer	1	29	631028	Float Bowl "O" Ring	1
5	631183	Dust Seat (Throttle)	1	30	631021	Inlet Needle, Seat & Clip (Incl. Ref. #31)	1
6	631621	Throttle Shutter	1	31	631022	Spring Clip	1
7	650506	Shutter Screw	2	36	640080	Main Nozzle Tube	1
10	632553	Choke Shaft & Lever Asm.	1	37	632547	"O" Ring, Main Nozzle Tube	1
14	631815	Choke Shutter	1	40	640087	High Speed Bowl Nut	1
15	630735	Choke Positioning Spring	1	44	27110	Bowl Nut Washer	1
16	632164	Fuel Fitting	1	48	631027	Welch Plug	1
25	631700	Float Bowl	1				
26	632386	Float Dampening Spring	1				

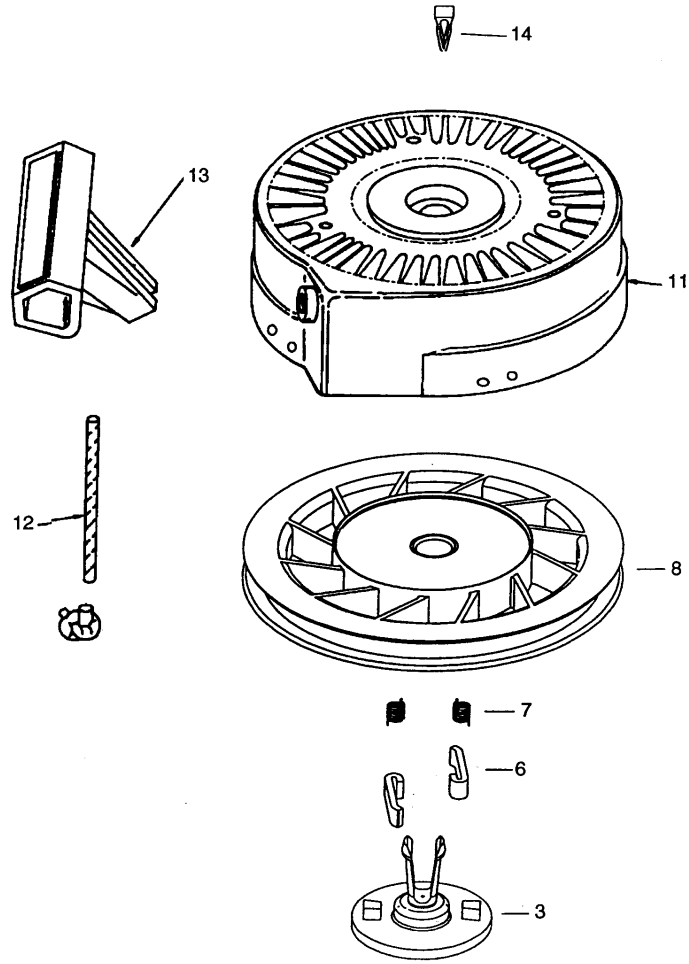
ENGINE TECUMSEH MODEL NO. HSK600-1681T



ENGINE TECUMSEH MODEL NO. HSK600-1681T

Ref. No.	Part No.	Description	No. Used	Ref. No.	Part No.	Description	No. Used
1		Cylinder (Order Short Block if Replacement is needed)	1	135	611049	Resistor Spark Plug	1
16B	490291A	Air Vane	1	163	650838	Washer	1
19	570707	Extension Spring	1	*169	510325A	Cover Plate Gasket	1
24	530110	Ball Bearing	1	172A	570708	Compression Release Cover	1
29	530150	Needle Bearing & Liner Set (37 Needles)	1	174	650579	Screw, Torx T-25	1
29A	530104A	Cartridge Bearing	1	177	650959	Screw	2
30	290602	Crankshaft	1	*184	510326A	Carburetor Gasket	2
33A	570644	Cover Plate	1	186	490322	Governor Link	1
34A	650579	Screw, Torx T-25	4	187	570438A	Spacer	1
41	310283A	Piston & Pin Assembly	1	216	570645	R.P.M. Adjusting Lever	1
42	310190	Ring Set	2	239	35815	Air Cleaner Gasket	1
43	310167	Piston Pin Retaining Ring	2	257	650911	Screw, Torx T-30	4
45	310235B	Connecting Rod Assembly (Incl. Ref. #29, 29A, & 46)	1	258	350422	Blower Housing Base (Incl. Ref. #27)	1
46	650633	Connecting Rod Bolt	4	260	350437	Blower Housing	1
*69	510292A	Cylinder Cover Gasket	1	261	650737	Screw	4
*69A	510323A	Cover Plate Gasket	1	*274	510346A	Exhaust Gasket	1
75	510319	Oil Seal	2	275	390330	Muffler (Incl. Ref. #274 & 277)	1
77	530105	Cartridge Bearing	1	277	650869	Screw	2
89A	611032	Adapter Sleeve	1	285	590551A	Starter Cup	1
90	611066	Flywheel	1	287	650926	Screw	3
92	650815	Belleville Washer	1	325	29443	Wire Clip	1
93	650390	Flywheel Nutt	1	330	611153	Wire Harness	1
100	34443A	Solid State Ignition (Incl. Ref. #101)	1	370A	36261	Instruction Decal	1
101	610118	Spark Plug Cover	1	380	640086	Carburetor (Incl. Ref. #184)	1
103	651007	Screw, Torx T-15	2	383	570434	Spit Cup	1
105A	650796	Stud	4	384	650431	Screw, Torx T-25	2
*119	510274A	Cylinder Head Gasket	1	390	590743	Rewind Starter	
120	250240B	Cylinder Head	1	400	510324B	Gasket Set	1
131	650477	Screw, Torx T-30	5	420	730227A	2-Cycle Oil (8 oz.)	1

*Included in Gasket Set No. 510324B



RECOIL STARTER NO. 590743

Ref. No.	Part No.	Description	No. Used	Ref. No.	Part No.	Description	No. Used
0	590743	Rewind Starter	1	11	590643	Starter Housing Ass'y	1
3	590740	Retainer	1	12	590535	Starter Rope (Length 98" x 9/64" Dia.)	1
6	590616	Starter Dog	2	13	590701	Starter Handle	1
7	590617	Dog Spring	2	14	590741	Locking Tab	1
8	590645A	Pulley & Rewind Spring Ass'y	1				

LAWN-BOY PART NUMBER INDEX

3319-714

Part No.	Description	Pg. No.	Ref. No.	Qty.	Part No.	Description	Pg. No.	Ref. No.	Qty.
700918	Key - Ignition	1	10	1	71-5090	Handle - Upper	7	18	1
10-8040	Key - Square	4	4	1	71-5120	Bail	7	1	1
12-3270	Screw - Hex. Flange Hd.	3	25	3	71-5150	Guard - Drive Cover	3	10	1
20-4320	Washer - Rubber	1	5	2	71-5160	Arm - Brake	3	15	1
23-3250	Wheel	5	24	2	71-5200	Frame Assembly	5	29	1
23-3250	Wheel	6	25	2	71-5200	Frame Assembly	6	32	1
23-7470	Guide - Rope	1	14	1	71-5210	Support - Engine	5	28	1
28-9170	Cord - 7 Ft.	8	*	1	71-5210	Support - Engine	6	33	1
36-3860	Screw - Special	3	11	1	71-5220	Bracket - Fuel Tank	5	31	1
38-7820	Bearing - Ball	3	27	2	71-5220	Bracket - Fuel Tank	6	35	1
38-8620	Flange - Bearing	3	29	1	71-5240	Panel - Control	1	9	1
40-5940	Switch - On-Off	1	8	1	71-5241	Panel - Control	1	*	1
44-2750	Body - Primer	1	13	1	71-5260	Pulley - Idler	3	16	1
44-3173	Hose - Primer	1	15	1	71-5270	Cover - Bracket	3	41	1
46-8092	Screw - Hex. Flange Hd.	2	29	2	71-5290	Plate - Engine	5	12	1
49-2482	Hose - Fuel	5	6	1	71-5290	Plate - Engine	6	14	1
49-2482	Hose - Fuel	6	7	1	71-5310	Bracket - Support	3	40	1
52-7270	Washer - Rubber	3	35	1	71-5320	Washer - Engine Support	6	6	1
52-7280	Washer - Thrust	3	28	2	71-5320	Washer - Engine Support	5	7	1
52-7290	Retainer - Bearing	3	39	1	71-5330	Adjuster - Cable	7	5	1
52-9110	Flange - Bearing	3	34	1	71-5340	Guard - Muffler	1	19	1
55-3578	Gas Cap Assembly	1	4	1	71-5350	Screw - Thread Forming	3	9	2
55-8700	Housing - Rotor	3	1	1	71-5370	Tube - Handle Lower	7	17	1
55-8921	Support - Chute Ring	2	33	1	71-5381	Belt - Drive	6	19	1
55-8950	Plate - Friction	1	6	2	71-5381	Belt - Drive	5	21	1
55-9202	Rotor Shaft Assembly	4	1	1	71-5390	Scraper	3	30	1
55-9310	Seal - Fuel Tank	5	1	1	71-5410	Pulley - Rotor	3	24	1
55-9310	Seal - Fuel Tank	6	1	1	71-5440	Spacer - Wheel	5	25	2
55-9322	Cable - Clutch	7	7	1	71-5440	Spacer - Wheel	6	27	2
55-9370	Spacer	4	5	4	71-5470	Spring - Brake	3	14	1
55-9370	Spacer - Detent Arm	1	25	1	71-5480	Spring - Clutch	7	4	1
55-9370	Spacer - Rotor Blade	7	8	1	71-5530	Cover - Spring	7	3	1
55-9430	Bracket - Z	3	4	1	71-5590	Spring - Extension	1	22	1
56-2680	Deflector - Discharge	2	44	1	71-5600	Bracket - Shroud	7	16	1
57-3830	Tube	3	7	2	77-0402	Starter Motor Assembly	8	*	1
61-4670	Stop - Pinion	8	2	1	77-0402	Starter Motor Assembly	6	36	1
61-4680	Ring - Lock	8	1	1	80-0700	Screw - Hex. Torx	6	38	2
61-4690	Spring - Anti Drift	8	3	1	80-3730	Base - Switch Housing	8	10	1
61-4810	Boot - Switch	8	7	1	80-3740	Cap - Switch Housing	8	8	1
61-4820	Switch - Starter	8	6	1	80-4610	Arm - Detent	1	26	1
66-6600	Plate - Rotor	4	2	2	80-4620	Washer - Spacer	3	18	1
66-6870	Decal - Rotor Drive	7	2	1	84-1971	Screw - Countersunk	4	6	8
66-7460	Bulb - Primer	1	12	1	84-5240	Pinion Assembly	8	4	1
70-7802	Motor	8	13	1	84-5610	Guide - Cable	5	33	1
70-7810	Housing - Upper Starter	8	5	1	84-5610	Guide - Cable	6	41	1
70-7820	Housing - Lower Starter	8	12	1	88-0781	Blade - Rotor	4	9	2
70-7850	Cover - Gear	8	15	1	92-4853	Handle - Starter	2	45	1
70-7890	Cap - Pinion	8	18	1	92-6003	Gear & Shaft Assembly	8	16	1
70-7900	Bushing - Upper	8	14	1	92-6012	Bracket & Stud Assembly	6	5	1
71-4911	Sideplate - L.H.	3	44	1	92-6012	Bracket - & Stud Assembly	5	5	1
71-4920	Sideplate - R.H.	3	38	1	92-6031	Screw	6	42	A/R
71-4930	Housing - Lower	3	33	1	94-2789	Screw - Thread Form.	5	32	3
71-4940	Handle - Chute	1	7	1	94-2789	Screw - Thread Forming	6	8	3
71-4950	Ring - Chute	2	34	1	94-2790	Discharge Chute Assembly	1	2	1
71-4980	Retainer - Chute Ring L.H.	2	28	1	94-2900	Decal - Danger	1	3	1
71-4990	Retainer - Chute Ring R.H.	2	35	1	94-8888	Shroud - Upper	2	37	1
71-5020	Tank - Fuel	5	2	1	94-8889	Shroud - Lower	7	14	1
71-5020	Tank - Fuel	6	2	1	94-9878	Decal - 320	1	16	1
71-5030	Cover - Drive	3	8	1	94-9879	Decal - 320E	1	*	1
71-5050	Hub - Sheave	5	14	1	94-9933	Plug - Power	8	9	1
71-5050	Hub - Sheave	6	16	1	95-1904	Decal - Hot	2	46	1
71-5060	Cap - Sheave	5	20	1	95-2665	Decal - Control Panel	1	27	1
71-5060	Cap - Sheave	6	23	1	95-2666	Decal - Control Panel	1	*	1
71-5070	Hub - Pulley	3	23	1	2412-91	Clamp - Cable	6	11	1

*Not Illustrated

LAWN-BOY PART NUMBER INDEX (Cont.)

Part No.	Description	Pg. No.	Ref. No.	Qty.	Part No.	Description	Pg. No.	Ref. No.	Qty.
2412-98	Clamp - Hose	5	3	2	3257-3	Key - Woodruff	5	11	1
2412-98	Clamp - Hose	6	3	2	3257-3	Key - Woodruff	6	13	1
250-7	Cable Tie	8	19	1	3290-225	Nut - Speed	7	12	4
250-7	Strap - Starter Tie Down	6	40	1	3290-320	Nut - Push	5	23	2
321-4	Screw - Hex. Hd.	3	5	10	3290-320	Nut - Push	6	24	2
321-4	Screw - Hex. Hd.	4	7	4	3290-359	Screw - Hex. Hd.	1	18	4
321-4	Screw - Hex. Hd.	1	23	4	3290-456	Washer - Belleville	5	18	1
321-4	Screw - Hex. Hd.	5	27	6	3290-456	Washer - Belleville	6	21	1
321-4	Screw - Hex. Hd.	6	30	6	3290-456	Washer - Belleville	3	22	1
321-6	Screw - Hex Hd. Cap	3	46	1	3290-456	Washer - Belleville	2	42	2
321-8	Screw - Hex. Hd.	4	8	1	3290-486	Nut - Push	7	6	5
321-30	Screw - Hex. Hd.	3	21	1	3296-2	Nut - Lock	8	11	2
321-39	Screw - Hex. Washer Hd.	3	45	1	3296-2	Nut - Lock	1	20	4
322-3	Screw - Hex Hd.	7	13	2	3296-2	Nut - Lock	3	43	3
322-3	Screw - Hex. Hd.	5	16	3	3296-16	Nut - Lock	5	4	1
322-3	Screw - Hex. Hd.	6	18	3	3296-16	Nut - Lock	6	4	1
322-5	Screw - Hex. Hd.	5	26	1	3296-29	Nut - Lock	5	13	9
322-5	Screw - Hex. Hd.	6	28	1	3296-29	Nut - Lock	6	15	9
323-44	Screw - Hex. Hd.	3	17	1	3296-29	Nut - Lock	7	15	2
3229-11	Bolt - Carriage	3	32	3	3296-29	Nut - Lock	2	41	2
3230-16	Bolt - Carriage	2	36	3	3296-39	Nut - Lock	3	13	1
3230-22	Bolt - Carriage	1	1	2	3296-42	Nut - Lock	2	31	5
3234-25	Screw - Hex. Hd.	3	37	1	3296-42	Nut - Lock	3	3	21
3235-6	Screw - Locking Hex. Hd.	5	17	1	3296-42	Nut - Lock	5	9	6
3235-6	Screw - Locking Hex. Hd.	6	20	1	3296-42	Nut - Lock	6	29	6
3250-32	Screw - Pan Hd.	2	38	2	3296-56	Nut - Lock	4	3	13
3255-10	Washer - Lock	6	43	A/R	3296-56	Nut - Lock	2	30	1
3256-22	Washer - Flat	3	6	5	3299-1	Eyebolt	7	9	1
3256-22	Washer - Flat	5	8	4	32105-8	Screw - Hex. Hd.	3	26	3
3256-22	Washer - Flat	1	24	5	32105-11	Screw - Slot Hex Hd.	7	10	3
3256-22	Washer - Flat	6	31	4	32105-15	Screw - Hex. Flange Hd.	3	12	7
3256-22	Washer - Flat	2	32	2	32115-14	Nut - U	3	2	1
3256-23	Washer - Flat	5	15	1	32128-10	Nut - Flange Lock	3	31	3
3256-23	Washer - Flat	6	17	1	32144-10	Screw - Thread Forming	6	10	1
3256-24	Washer - Flat	3	36	1	32144-27	Screw - Thread Forming	6	9	3
3256-55	Washer	3	20	2	32144-53	Screw - Slotted Flange Hd.	1	11	2
3256-61	Washer - Flat	1	21	4	32144-53	Screw - Thread Form	7	11	3
3256-67	Washer - Flat	3	42	2	32144-53	Screw - Thread Forming	5	30	1
3256-68	Washer - Flat	2	43	2	32144-53	Screw - Thread Forming	6	34	1
3256-70	Washer - Flat	2	39	3	32144-101	Screw - Machine	8	17	2
3256-71	Washer - Flat	5	19	2	32149-1	Nut - Keps	2	40	3
3256-71	Washer - Flat	6	22	2					

*Not Illustrated

MAINTENANCE RECORD

Date									

