

LAWN-BOY®

Silver Series® Lawnmower

Model No. 10330—20000001 and Up

Parts Catalog

Ordering Replacement Parts

To order replacement parts, please supply: the part number, the quantity, and the description of each part desired.

Understanding Reference Numbers

Each identified part in an illustration has a reference number. The reference number for a part also appears in the parts list, along with other information about the part.

This catalog uses two special reference number formats, one to indicate parts in a service assembly and another to indicate the quantity of a given part in an illustration.

Service Assembly Reference Numbers

Parts in service assemblies have reference numbers in the form **a:b**. The **a** represents the reference number of the entire service assembly and the **b** represents a sequential number unique to each part within the service assembly.

For example, a wheel assembly might be identified by reference number **6**, the tire by **6:1**, the valve by **6:2**, and the wheel by **6:3**. When you order the assembly identified by reference number **6**, you receive all parts identified by reference numbers **6:1**, **6:2**, and **6:3**. However, you may also order any part individually.

Reference numbers of this type appear in illustrations and in part lists.

Reference Numbers Indicating Quantity

In an illustration, if a reference number indicates more than one part, the reference number has the form **nX y**. The **n** represents the quantity of the part, the **X** is the multiplication symbol, and the **y** represents the reference number.

For example, in an illustration, the reference number **2X 37** means that two of the parts identified by reference number **37** are indicated.

Contents

| Description | Page | Description | Page |
|--------------------------------------|------|--|------|
| Mulch Plate And Wheel Assembly | 3 | Carburetor No. 640266 | 9 |
| Housing Assembly | 4 | Engine-LEV100-345001D | 10 |
| Gear Case Assembly No. 92-7735 | 5 | Engine-LEV100-345001D | 11 |
| Engine And Blade Assembly | 6 | Engine-LEV100-345001D | 12 |
| Rear Axle Assembly | 7 | Recoil Starter No. 590737 | 13 |
| Handle And Controls Assembly | 8 | Recoil Starter No. 590694 (Optional) | 14 |

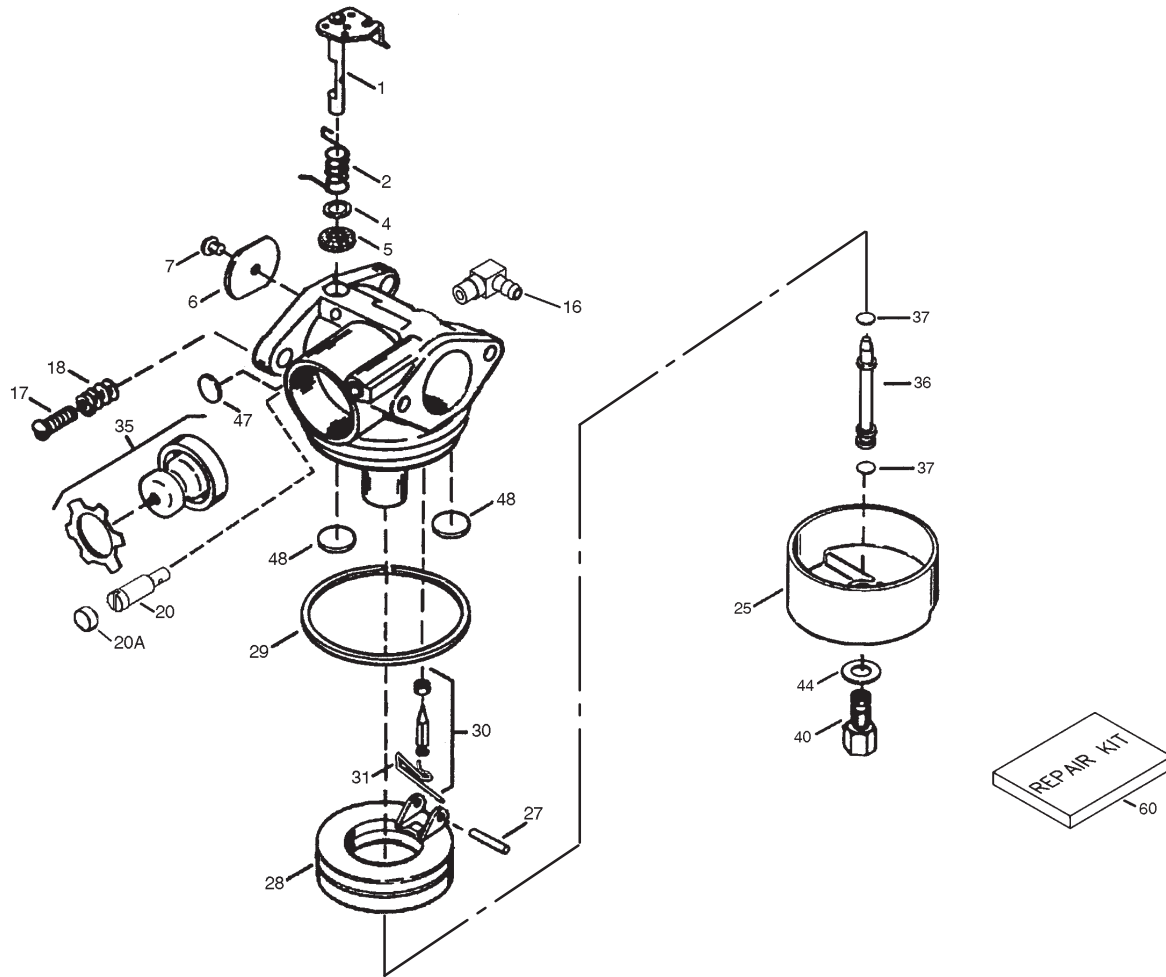
Accessories

| Description | Model / Part No. | Description | Model / Part No. |
|-------------------------------|------------------|-------------------------|------------------|
| Rear Bagging Kit | 89800(684690) | Side Bagging Kit | 89817 |
| Leaf Bag | 89804(681001) | Leaf Shredder Kit | 89860 |
| Side Bag Kit With Chute | 89811 | | |

Part Description Abbreviations

Part descriptions in this catalog may include the following abbreviations.

| Abbreviation | Meaning | Abbreviation | Meaning |
|--------------|-----------------------------------|--------------|-------------------------|
| AR | as required | INC | incorporated |
| ASM | assembly | LH | left hand |
| CARR | carriage | NI | nylon insert |
| DEG | degrees | PPH | Phillips pan head |
| FH | flat head | PTH | Phillips truss head |
| GA | gauge | PTO | power take off |
| HF | hex flange | RH | right hand |
| HH | hex head | SFH | slotted fillister head |
| HHF | hex head flange | SHH | slotted hex head |
| HLH | hex lag head | SQH | square head |
| HJ | hex jam | SHWH | slotted hex washer head |
| HOC | height-of-cut | SPH | slotted pan head |
| HS | hex socket | SRH | slotted round head |
| HSBH | hex socket button head | STD | standard |
| HSFH | hex socket flat head | TAP | self tapping |
| HSH | hex socket head | TTH | Torx truss head |
| HWH | hex washer head | WH | wing head |
| HWHTF | hex washer head thread forming | | |



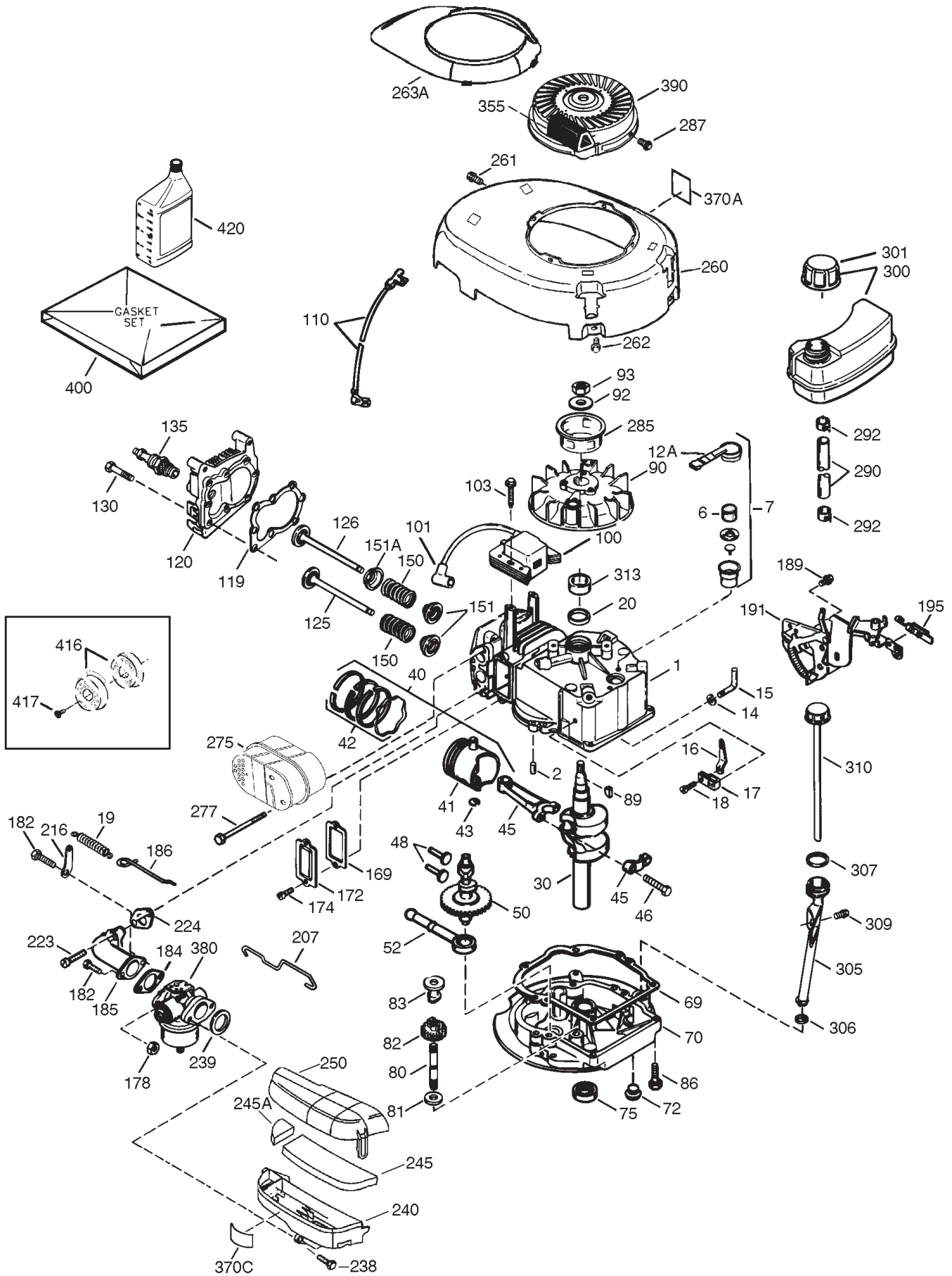
Carburetor No. 640266

| Ref. No. | Part No. | Qty. | Description |
|----------|----------|------|---------------------------------------|
| 0 | 640266 | 1 | Carburetor |
| 1 | 631615 | 1 | Throttle Shaft & Lever Assembly |
| 2 | 631767 | 1 | Throttle Return Spring |
| 4 | 631184 | 1 | Dust Seal Washer |
| 5 | 631183 | 1 | Dust Seal (Throttle) |
| 6 | 640070 | 1 | Throttle Shutter |
| 7 | 650506 | 1 | Shutter Screw |
| 16 | 631807 | 1 | Fuel Fitting |
| 17 | 651025 | 1 | Throttle Crack Screw/Idle Speed Screw |
| 18 | 630766 | 1 | Tension Spring |
| 20 | 640016 | 1 | Idle Restrictor Screw |
| 20A | 640053 | 1 | Idle Restrictor Screw Cap |
| 25 | 631867 | 1 | Float Bowl |
| 27 | 631024 | 1 | Float Shaft |
| 28 | 632019 | 1 | Float |
| 29 | 631028 | 1 | Float Bowl "O" Ring |
| 30 | 631021 | 1 | Inlet Needle, Seat, & Clip (Incl. 31) |
| 31 | 631022 | 1 | Spring Clip |
| 35 | 640259 | 1 | Primer Bulb/Retainer Ring |
| 36 | 632735 | 1 | Main Nozzle Tube |

| Ref. No. | Part No. | Qty. | Description |
|----------|----------|------|-------------------------------|
| 37 | 632547 | 2 | O-Ring, Main Nozzle Tube |
| 40 | 640087 | 1 | High Speed Bowl Nut |
| 44 | 27110A | 1 | Bowl Nut Washer |
| 47 | 630748 | 1 | Welch Plug, Idle Mixture Well |
| 48 | 631027 | 1 | Welch Plug, Atmospheric Vent |
| 60 | 632760 | 1 | Repair Kit |

Obtain parts from local Tecumseh dealer

Engine-LEV100-345001D



Engine-LEV100-345001D

| Ref. No. | Part No. | Qty. | Description | Ref. No. | Part No. | Qty. | Description |
|----------|----------|------|---|----------|----------|------|----------------------------------|
| 1 | 37280 | 1 | Cylinder (Incl. 2,20 & 150) | 120 | 36825 | 1 | Cylinder Head |
| 2 | 26727 | 2 | Dowel Pin | 125 | 37288 | 1 | Exhaust Valve (Std.) (Incl. 151) |
| 6 | 33734 | 1 | Breather Element | 126 | 37289 | 1 | Intake Valve (Std.) (Incl. 151) |
| 7 | 36557 | 1 | Breather Body ASM (Incl. 6 & 12A) | 130 | 6021A | 8 | Screw |
| 12A | 36558 | 1 | Breather Cover & Tube | 135 | 35395 | 1 | Resistor Spark Plug (RJ19LM) |
| 14 | 28277 | 1 | Washer | 150 | 31672 | 2 | Valve Spring |
| 15 | 30589 | 1 | Governor Rod (Incl. 14) | 151 | 31673 | 2 | Valve Spring Cap |
| 16 | 34839A | 1 | Governor Lever | 151A | 40017 | 1 | Intake Valve Seal |
| 17 | 31335 | 1 | Governor Lever Clamp | 169 | 36783 | 1 | Valve Cover Gasket |
| 18 | 651018 | 1 | Screw, Torx T-15 | 172 | 36784 | 1 | Valve Cover |
| 19 | 36281 | 1 | Extension Spring | 174 | 30200 | 2 | Screw |
| 20 | 32600 | 1 | Oil Seal | 178 | 29752 | 2 | Nut & Lock Washer |
| 30 | 37124 | 1 | Crankshaft | 182 | 6201 | 2 | Screw |
| 40 | 35544A | 1 | Piston, Pin & Ring Set (Std.) | 184 | 26756 | 1 | Carburetor To Intake Pipe Gasket |
| 40 | 35545A | 1 | Piston, Pin & Ring Set (.010" OS) | 185 | 36785 | 1 | Intake Pipe |
| 40 | 35546 | 1 | Piston, Pin & Ring Set (.020" OS) | 186 | 32653 | 1 | Governor Link |
| 41 | 35541 | 1 | Piston & Pin ASM (Std.) (Incl. 43) | 189 | 650839 | 2 | Screw |
| 41 | 35542 | 1 | Piston & Pin ASM (.010" OS) (Incl. 43) | 191 | 36559A | 1 | S.E. Brake Bracket (Incl. 195) |
| 41 | 35543 | 1 | Piston & Pin ASM (.020" OS) (Incl. 43) | 195 | 610973 | 1 | Terminal |
| 42 | 35547A | 1 | Ring Set (Std.) | 207 | 34336 | 1 | Throttle Link |
| 42 | 35548A | 1 | Ring Set (.010" OS) | 216 | 33086 | 1 | R.P.M. Adjusting Lever |
| 42 | 35549 | 1 | Ring Set (.020" OS) | 223 | 650451 | 2 | Screw |
| 43 | 20381 | 2 | Piston Pin Retaining Ring | 224 | 36786 | 1 | Intake Pipe Gasket |
| 45 | 36777 | 1 | Connecting Rod ASM (Incl. 46) | 238 | 650806 | 2 | Screw |
| 46 | 32610A | 2 | Connecting Rod Bolt | 239 | 34338 | 1 | Air Cleaner Gasket |
| 48 | 27241 | 2 | Valve Lifter | 240 | 37115 | 1 | Air Cleaner Body |
| 50 | 37032 | 1 | Camshaft (NCR) | 245 | 37116 | 1 | Air Cleaner Filter |
| 52 | 29914 | 1 | Oil Pump ASM | 245A | 37117 | 1 | Air Cleaner Filter |
| 69 | 35261 | 1 | Mounting Flange Gasket | 250 | 37118 | 1 | Air Cleaner Cover |
| 70 | 34311E | 1 | Mounting Flange (Incl. 72 thru 83, 306) | 260 | 37125 | 1 | Blower Housing |
| 72 | 36083 | 1 | Oil Drain Plug | 261 | 30200 | 2 | Screw |
| 75 | 27897 | 1 | Oil Seal | 262 | 650831 | 2 | Screw |
| 80 | 30574A | 1 | Governor Shaft | 263A | 36758 | 1 | Starter Grill |
| 81 | 30590A | 1 | Washer | 275 | 37462 | 1 | Muffler |
| 82 | 30591 | 1 | Governor Gear ASM (Incl. 81) | 277 | 650988 | 2 | Screw |
| 83 | 30588A | 1 | Governor Spool | 285 | 35000A | 1 | Starter Cup |
| 86 | 650488 | 6 | Screw | 287 | 650926 | 2 | Screw |
| 89 | 611004 | 1 | Flywheel Key | 290 | 34357 | 1 | Fuel Line |
| 90 | 611112 | 1 | Flywheel | 292 | 26460 | 2 | Fuel Line Clamp |
| 92 | 650815 | 1 | Belleville Washer | 300 | 35586 | 1 | Fuel Tank (Incl. 292 & 301) |
| 93 | 650816 | 1 | Flywheel Nut | 301 | 36246 | 1 | Fuel Cap |
| 100 | 34443B | 1 | Solid State Ignition | 305 | 35577 | 1 | Oil Fill Tube |
| 101 | 610118 | 1 | Spark Plug Cover | 306 | 36996 | 1 | "O"-Ring |
| 103 | 651007 | 2 | Screw, Torx T-15 | 307 | 35499 | 1 | "O"-Ring |
| 110 | 37047 | 1 | Ground Wire | 309 | 650562 | 1 | Screw |
| 119 | 37028 | 1 | Cylinder Head Gasket | 310 | 36801 | 1 | Dipstick |
| | | | | 313 | 34080 | 1 | Spacer |
| | | | | 355 | 590701 | 1 | Starter Handle |
| | | | | 370A | 36261 | 1 | Lubrication Decal |
| | | | | 370C | 37199 | 1 | Primer Decal (3X) |
| | | | | 380 | 640266 | 1 | Carburetor (Incl. 184) |
| | | | | 390 | 590737 | 1 | Rewind Starter |
| | | | | 400 | 37029A | 1 | Gasket Set |

Obtain parts from local Tecumseh dealer

Engine-LEV100-345001D

| Ref. No. | Part No. | Qty. | Description |
|----------|----------|------|----------------------------------|
| 416 | 36085 | 1 | Spark Arrestor Kit |
| 417 | 650821 | 1 | Screw |
| 420 | 730225A | 1 | SAE30 4-Cycle Engine Oil (Quart) |

| Ref. No. | Part No. | Qty. | Description |
|----------|----------|------|-------------|
|----------|----------|------|-------------|

Obtain parts from local Tecumseh dealer

LAWN-BOY®